

D947 - BRIEFING NOTES

BETTERMENT OF GRAVEL STEEP SECTION ON D947 (KM2.0 TO KM2.95) TO CONCRETE PAVEMENT. IN UMZUMBE LOCAL MUNICIPALITY, REGIONAL OFFICE, DURBAN REGION, GRADE 4CE OR HIGHER

1. TENDERING PROCEDURE

T1.2 TENDER DATA (Page T6-T13)

The conditions of tender are the standard conditions of tender contained in Annex C of the Construction Industry Development Board Standard for Uniformity in Engineering and Construction Works Contracts, published in Government Gazette No. 42622 dated 8 August 2019.

C1.2

- (c) **'General Conditions of Contract for Construction Works, Third Edition (2015)'** issued by the South African Institution of Civil Engineering (abbreviated title 'General Conditions of Contract 2015' – 'GCC 2015'). This document is obtainable separately and Tenderers shall obtain their own copy.
- (d) **'Standard Specifications for Road and Bridge Works for South African Road Authorities (Draft Standard) (October 2020).'**

Scope of work:

- Establishment and De-establishment
- Provision of traffic accommodation facilities,
- Roadbed preparation,
- Clearing and Grubbing
- Construction of side drains using Packed Riprap (Rock Boulders).
- Excavation for culvert structures
- G7 Material from commercial suppliers (**The owner of the Quarry must have a valid mining permit for borrow pits and it must be obtained from DMR in consultation with DWS**)
- Construction of Pavement layers of 150 mm gravel compacted 95 % MDD, as per the SD0211, see page C130.
- Continuous quality control over materials and workmanship, and compliance with the Particular Specifications regarding environmental management and occupational health and safety, during all the above construction activities,
- Construction of Paver Liad Concrete Layers
- Pitching, stonework, cast in situ concrete for protection against erosion.
- Non-Structural Gabions.
- Finishing and tidying of the road and road reserve.

This document is obtainable separately and Tenderers shall obtain their own copy.

- (e) **'Occupational Health and Safety Act No. 85 of 1993', 'Occupational Health and Safety Amendment Act No. 181 of 1993', and the 'Construction Regulations, 2014'** (Government Notice No. R. 489 published in Government Gazette No. 40883 of 2 June 2017,). These documents are obtainable separately and Tenderers shall obtain their own copies.
- (f) **'Construction Industry Development Board Act No. 38 of 2000'** as amended and the **'Regulations in terms of the Construction Industry Development Board Act No. 38 of 2000'** (Government Notice No. R. 692 published in Government Gazette No. 26427 of 9 June 2004, as amended).

C2.1

Only those tenderers who satisfy the following criteria are eligible to submit tenders.

(a) CIDB registration

Only those tenderers who are registered with the CIDB, at close of tender, in a contractor grading designation equal to or higher than a grade 4. for a CE class of construction work, are eligible to have their tenders evaluated.

(b) Central Supplier Database

Tenderers, or in the event of a joint venture, each member of the joint venture, must be registered on the Central Supplier Database at the closing date for tender submissions. **Tenders received from such tenderers who do not comply with this requirement, will be considered non-responsive**

C2.13

C.2.13.3 Tender offers shall be submitted as an original hard copy.

C.2.13.5 The Employer's address for delivery of tender offers and identification details to be shown on each tender offer package are:

Location of Tender Box:	KZN Department of Transport, Durban Regional Office
Physical Address:	04 Aubrey Road, Pinetown,3600
Identification Details:	Quotation No.: ZNB02520/00000/00/DUR/INF/24/T

C2.15

The closing time for submission of Tender Offers is:

11:00am on Tuesday 10 of December 2024

Telegraphic, telephonic, telex, facsimile, electronic, e-mail and late tenders will not be accepted.

C2.16

The tender offer validity period is **twenty-four (24) weeks**, calculated from the date of bid closure.

C3.11

The evaluation of tender offers will be based on price and preference in accordance with the Preferential Procurement Regulations 2017, as amended.

The weighting of tender Price and Preference (SBD 6.1- Page T26) for the tender will be done by way of a point system:

In the case of acquisition of services, works or goods with a Rand value below R50 million:

- 80 points are assigned to Price; and
- 20 points are assigned to Preference.

The total points for Price and Preference in each case above must add up to 100 points.

The tenderer's B-BBEE Status Level Verification Certificate must comply with the requirements of Returnable Schedule D and be submitted as an attachment to the returnable schedule.

Returnable Schedules

Notes to tenderer:

1. Returnable schedules have been based on the CIDB Standard for Uniformity in Construction Procurement and incorporates National Treasury requirements within them. Returnable schedules are separated into the following categories:
 - i) Forms, certificates and schedules for completion by the tenderer for use in the quantitative and qualitative evaluation of the tender (Forms A, B and C).
 - ii) A list of other returnable documents for completion by the tenderer and which will subsequently be incorporated into the contract (Section C1).
2. Failure to fully complete the relevant returnable documents shall render such a tender offer to be declared non-responsive.
3. Tenderers shall note that their signatures appended to each returnable form represents a declaration that they vouch for the accuracy and correctness of the information provided, including the information provided by candidates proposed for the specified key positions.
2. Notwithstanding any check or audit conducted by or on behalf of the Employer, the information provided in the returnable documents is accepted in good faith and as justification for entering a contract with a tenderer. If subsequently any information is found to be incorrect such discovery shall be taken as wilful misrepresentation by that tenderer to induce the contract.

The tenderer must complete the following returnable documents:

Document Checklist: Page T16 Please complete all documents as required, use the checklist

Returnable Schedules required for Tender Evaluation Purposes (A to P)

- A - CERTIFICATE OF ATTENDANCE AT CLARIFICATION MEETING – NOT APPLICABLE
- B - RECORD OF ADDENDA TO TENDER DOCUMENTS
- C - COMPULSORY ENTERPRISE QUESTIONNAIRE - for JV's – must be completed individually by each JV partner
- D - STANDARD BIDDING DOCUMENTS
 - SBD 1: INVITATION TO BID- for JV's – SBD1 must be completed individually by each JV partner
 - SBD 4: BIDDER'S DISCLOSURE (All questions must be answered. Pay special attention to Item 2.3 – please declare all companies that the owners of the bidding company have interest in) for JV's – SBD4 must be completed individually by each JV partner
 - SBD 6.1: PREFERENCE POINTS CLAIM FORM IN TERMS OF THE PREFERENTIAL PROCUREMENT REGULATIONS 2017- 6.1 must be completed to claim BBBEE Points. It should be completed as follows:
 - B-BBEE Status Level of Contributor: 1 (As the BBBEE level the bidder's certificate or affidavit grants) = ...20 (Correlating points to level – see table 4.1) (maximum of 20 points). Must be properly witnessed.
- E - B-BBEE STATUS LEVEL VERIFICATION CERTIFICATE (The Sworn affidavit and the BBBEE SANAS accredited certificates must be issued in terms of the amended construction sector codes – gazette Vol.630 No.41267) The simplest and most frequent submission is a Sworn Affidavit. It should be noted that an affidavit must be an original that is certified by a commissioner of oaths. If a copy is submitted the contractor will not be awarded any preferential points and therefore lose out on 20 points. On the Affidavit one question is regarding the financial year for which the affidavit is done. This must be the latest financial year and not older than 12 months from date of closing of the bid, but also this time cannot be in the future, e.g. February 2022. All provisions for disclosing information under Oath must be complied with to ensure the affidavit is acceptable. For BBBEE certificate – these must be submitted as a copy – no need of certification.
- F - CERTIFICATE OF AUTHORITY FOR SIGNATORY (Provide Specimen Signature, ensure signatory remains constant and provide a Resolution letter, authorising the signatory to sign the bid documents with a specimen of his signature- both parts are required, if you don't submit any one of them your bid will be non-responsive.)
- G - CONSTRUCTION EXPERIENCE
- H - KEY PERSONNEL (G1 – Management, provide names of the 3 Key personnel and attach their CV's; G2 – Labour Enhanced activities – if applicable-provide the names of Foreman/Supervisor and Site Agent/Construction Manager with copies of their Qualification certificates and CV's)

- I - CONSTRUCTION EQUIPMENT
- J - PROPOSED SUBCONTRACTORS
- K - PARTICIPATION IN JOB CREATION USING LOCAL LABOUR (Minimum 6.64%)
- L - BIDDERS HEALTH AND SAFETY DECLARATION
- M - DEVIATIONS AND QUALIFICATIONS
- N - SCHEDULE OF ALTERNATIVE TENDERS
- O - NOTICES TO TENDERERS REGARDING THE COMPLETION OF FORMS
- P - ACCEPTABLE PROOF & RIGHT TO AWARD

RETURNABLE K - PARTICIPATION IN JOB CREATION USING LOCAL LABOUR

(Minimum 6.64%)

T46 Must be signed, dated and completed as indicated on the bottom of page T46. Please follow the instructions on page T41 on how to calculate the minimum labour percentage and note that the specified minimum labour percentage is 6.64% as indicated. **The field with the Bidders anticipated local labour % must be filled in.**

RETURNABLE L - HEALTH AND SAFETY DECLARATION

T45 Must be completed correctly and signed.

Question 3 has three subheadings- all of them must be answered.

If the bidder answers yes on a)- the name, position and CV must be filled in and attached in 4(a).

If the bidder answers yes on b) – the details in 4(b) must be filled in.

If the bidder answers yes on c) – the details in 4(c) must be filled in.

Page C3 as the form of offer must be signed and the amount in words must be completed failure to do this will invalidate the tender.

Please check that the amount on C3(For of Offer) and C44(BOQ Summary) match.

On a contractual note, the following must be mentioned:

The construction period is 3 months and failure to complete the project within the specified timeframe will result in penalties. It is of extreme importance that these risks be factored into the pricing of the documents as the bidders' price is also compared to realistic market value of the works that has been assessed by a third party to guide if the quoted price is reasonable.

4. THE CONTRACT

C1.2 - CONTRACT DATA

C1.2.2: DATA PROVIDED BY THE EMPLOYER

Clause 1.1.1.14: The time for achieving Practical Completion is **3 months** from the Commencement Date, including non-working days and special non-working days.

Clause 1.1.1.26: Pricing Strategy: The Contract is to be a Re-Measurement Contract.

Clauses SCC 4.1.1: The contract participation goal for local labour content is 6.64%

The penalty for failing to achieve the monetary value of the above target set by the Employer for local labour content in terms of Part E: Expanded Public Works Programme of section C3.3 Particular Specifications in Part C3: Scope of Work, is 5% of the monetary value by which the achieved monetary value falls short of the target monetary value.

Clause SCC 6.2.1 The security to be provided by the Contractor shall be: Fixed Performance guarantee of 8% of the first One Million Rand plus 3.5% of the balance of the Accepted Contract Sum.

Clause 6.5.1.2.3: The percentage allowance to cover overhead charges is 10%.

Clause 6.8.2: The values of the coefficients for calculating the Contract Price Adjustment Factor are:
Routine Maintenance (Excluding Bitumen):
 $a = 0.48$ $b = 0.37$ $c = 0.05$ $d = 0.10$

The "Consumer Price Index" will be as for the province of KwaZulu-Natal.

Clause 6.8.3: Price adjustments for variations in the costs of special materials are allowed.

Clause 6.10.1.5: The percentage advance on materials not yet built into the Permanent Works is 80%.

Clause 6.10.3: The percentage retention on the amounts due to the Contractor is 10%. The limit of retention money is 5% of the first One Million Rand plus 1.6% of the remaining amount of the tender offer excluding contract price adjustment, contingencies and VAT.

A retention guarantees in lieu of a cash retention is permitted.

The Risk and related matters regarding insurances are in accordance with page C14.

5. PRICING DATA

PART C2: PRICING DATA (C29-C44)

The quantities given in the Bill of Quantities are estimates only, and are subject to re-measure during the execution of the work. The quantities finally accepted and certified for payment, and not the quantities given in the Bill of Quantities, shall be used to determine payments to the Contractor. The Contractor shall obtain the Employer's Agent's detailed instructions for all work before ordering any materials or executing work or making arrangements for it. The quantities of material or work stated in the Bill of Quantities shall not be regarded as authorisation for the Contractor to order material or to execute work.

The Works as finally completed in accordance with the Contract shall be measured and paid for as specified in the Bill of Quantities and in accordance with the Standard Specifications for Road and Bridge Works for South African Road Authorities (COTO), Draft Standard (DS), October 2020, the Project Specifications and the Drawings. Unless otherwise stated, items are measured net in accordance with the Drawings, and no allowance has been made for waste. The validity of the contract will in no way be affected by differences between the quantities in the Bill of Quantities and the quantities finally certified for payment.

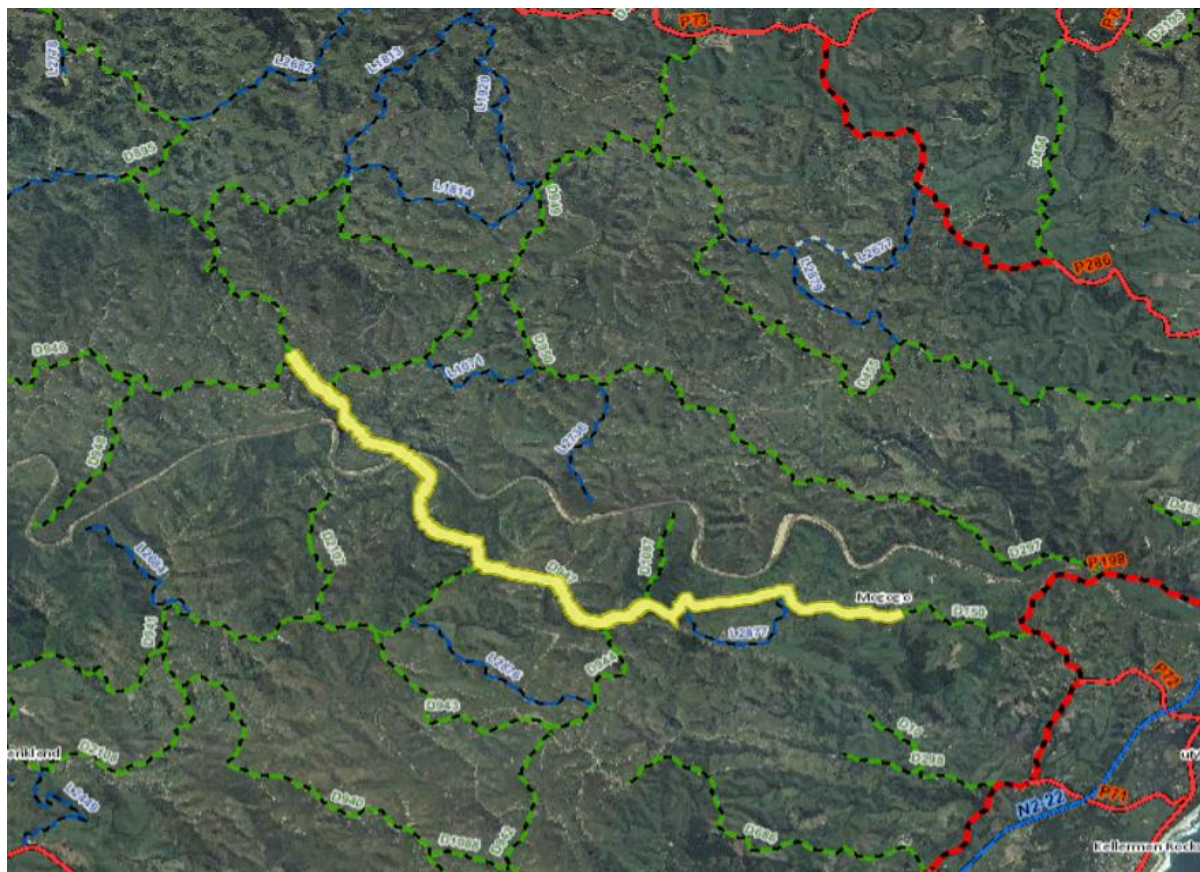
C4.1 LOCALITY PLAN

The works are located at uMzumbe local municipality, ward 13 and ward 15 you can log on to these co-ordinates from specific location, Lat: 30,60014 degrees south and Long: 30,50043 degrees East the road starts from here, but the construction section is at KM 2.0 to KM 2.95.

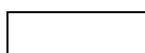
Figure C4.1 – Locality Plan of District Road D947

The approximate limits of construction can be seen in **Table C4.1**.

Table C4.1 – Approximate Start and End co-ordinates of D947



<u>Km</u>	<u>Latitude</u>	<u>Longitude</u>
D947 Km0.00	30.60014 S	30,50043° E
D947 Km11.54	30,55945° S	30,41477° E



PROJECT BACKGROUND

WARD: 13 AND WARD 15

TRIBAL COUNCIL: Shinga - Traditional Council

FACILITIES AND SERVICES ALONG THE ROAD: Schools,

TERRAIN: Mountainous

CONDITION OF THE CURRENT GRAVEL ON THE ROAD: LOSS OF GRAVEL MATERIAL

Please see the photos below for some images of the roads condition.

Road conditions





